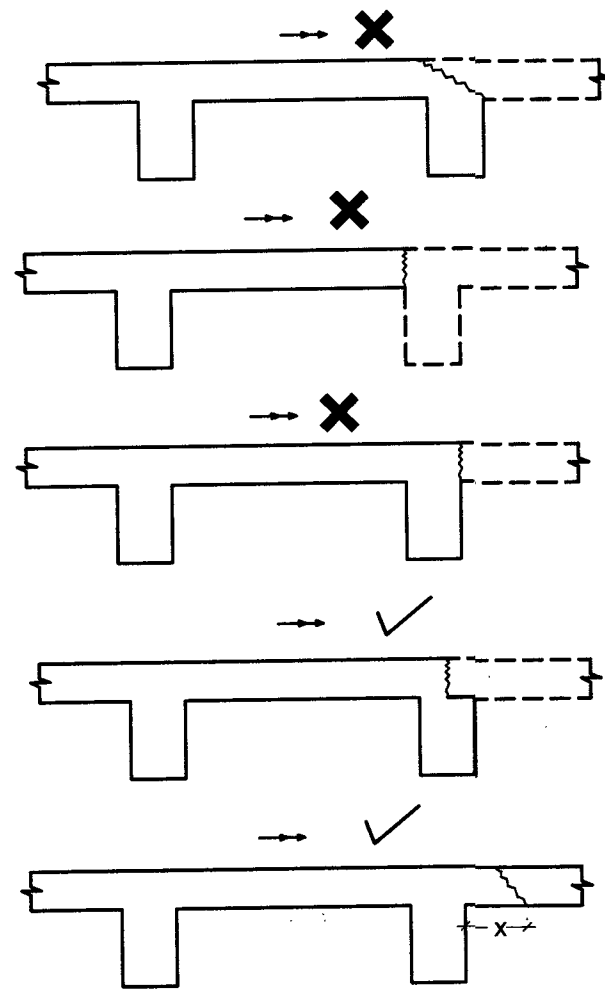


CONSTRUCTION JOINTS

112. GUIDELINES FOR CONSTRUCTION JOINTS

- a) CONSTRUCTION JOINTS ARE TO BE PROVIDED AT LOCATIONS OF ZERO OR MINIMUM SHEAR IN BEAMS AND SLABS.
 - b) CONSTRUCTION JOINTS ARE TO BE PROVIDED AT LOCATIONS OF MINIMUM STEEL CONGESTION.
 - c) CONSTRUCTION JOINTS ARE TO BE PERPENDICULAR TO THE COMPRESSTIVE FORCE ACROSS THE JOINT. THUS, IN MOST CASES THE JOINTS WILL HAVE TO BE PERPENDICULAR TO THE AXIS OF THE MEMBER.
 - d) ALL REINFORCING BARS INTERSECTED BY THE CONSTRUCTION JOINTS ARE TO EXTEND THROUGH THE JOINTS WITHOUT INTERCEPTION.
- THE HARDENED CONCRETE AT THE JOINTS IS TO BE SAND BLASTED OR CHIPPED, TO REMOVE ALL LOOSE MATERIAL AND LAITANCE, PRIOR TO POURING FRESH CONCRETE. WATER JET CLEANING AND FLUSHING THE JOINT WITH MORTAR OR GROUT ARE TO PRECEDE THE POURING OF FRESH CO NCRETE.
- e) PROVISION OF APPROPRIATE KEYS IS TO BE CONSIDERED IN CASE OF LARGE CROSS - SECTION OR THICK MEMBERS.



(X = 1/4th TO 3/4th SPAN)

FIG.- 46: CONSTRUCTION JOINTS IN SLABS

→ = INDICATES DIRECTION OF CONCRETING
 ✓ & X = INDICATES DO'S AND DON'TS

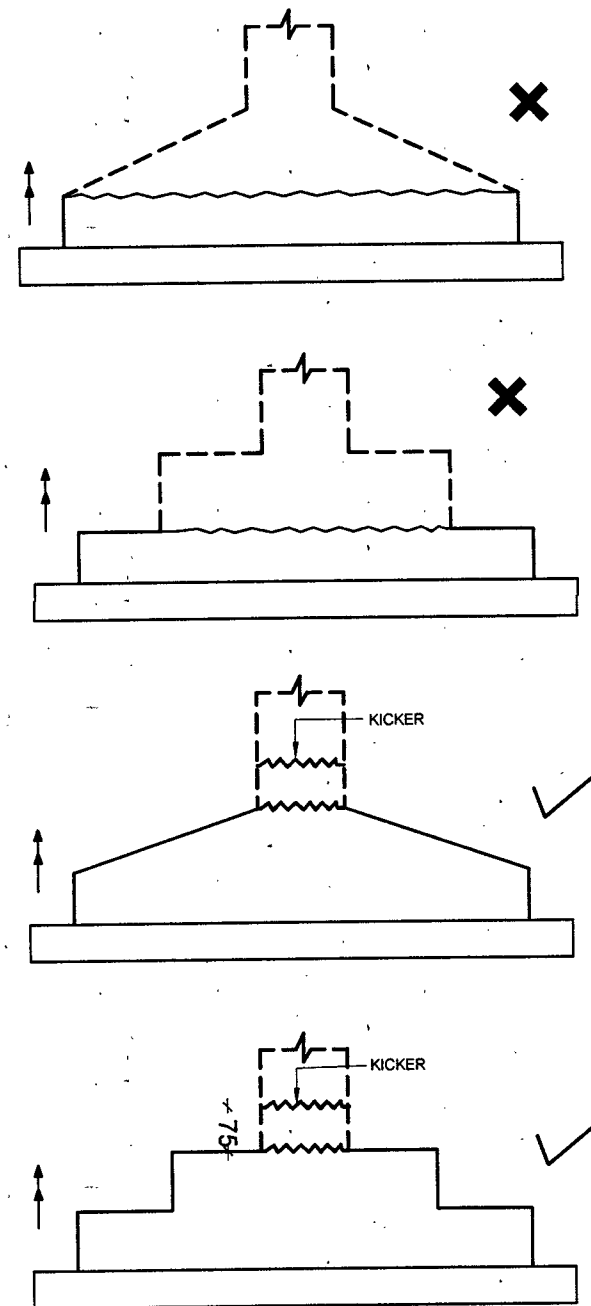


FIG.- 47: CONSTRUCTION JOINTS IN FOOTING

(PROVISION OF KICKER IS OPTIONAL)

SNO.	DATE	DESCRIPTION	BY DIR	DIR(DES)
			INITIAL	
REVISIONS				
DATE	30 MAY 2024	CHIEF ENGINEER JALANDHAR ZONE		
DRN	POOJA T			
TCD				
CKD				
SCALE	AS SHOWN	TYPICAL R.C.C. DETAILS		
SHT. SIZE	A3	CROSS SECTION OF CONSTRUCTION JOINTS IN BUILDING MEMBERS		
 AAD (DESIGN)		DRG. NO.	SHEET NO.	
 DIR (DESIGN) FOR CHIEF ENGINEER			31/34	
		DRG NO CEJZ / STD- 422/24		